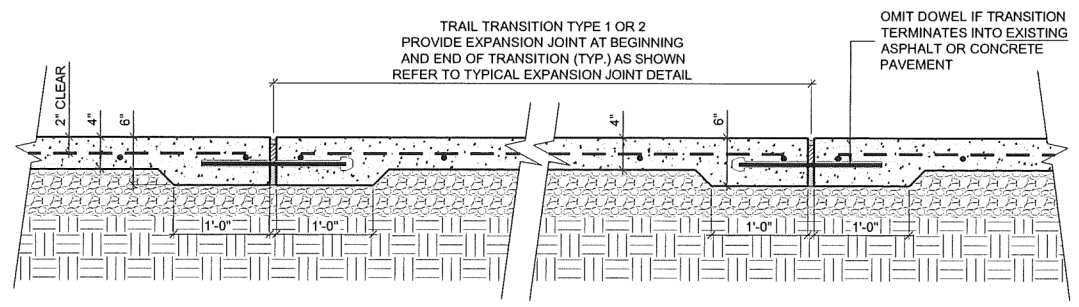
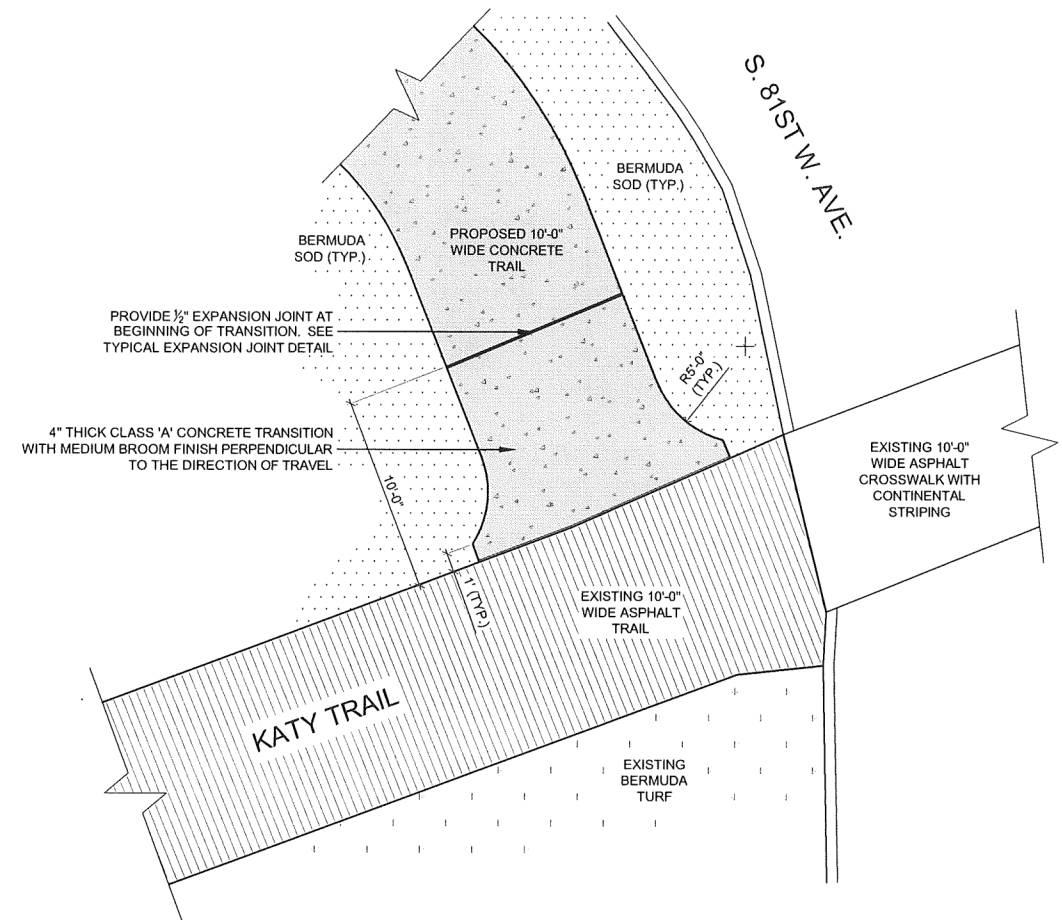


A PLAN - (CONCRETE) TRAIL TRANSITION TYPE 1
 18 NOT TO SCALE Sta. 43+59.67 - 43+74.67



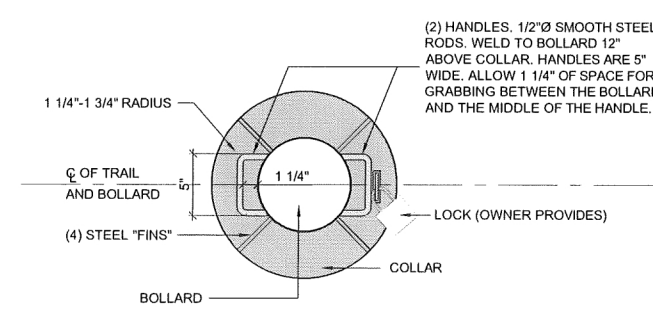
B SECTION - (CONCRETE) TRAIL TRANSITION TYPE 1 AND 2 (TYP.)
 18 NOT TO SCALE Sta. 43+59.67 - 43+74.67
 Sta. 49+94.52 - 50+04.65



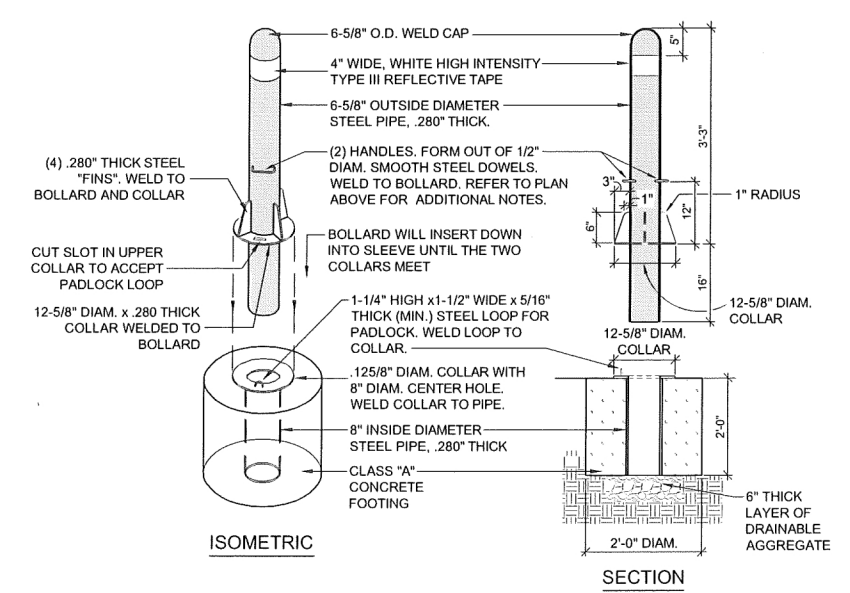
C PLAN - (CONCRETE) TRAIL TRANSITION TYPE 2
 18 NOT TO SCALE Sta. 49+94.52 - 50+04.65

BOLLARD NOTES:

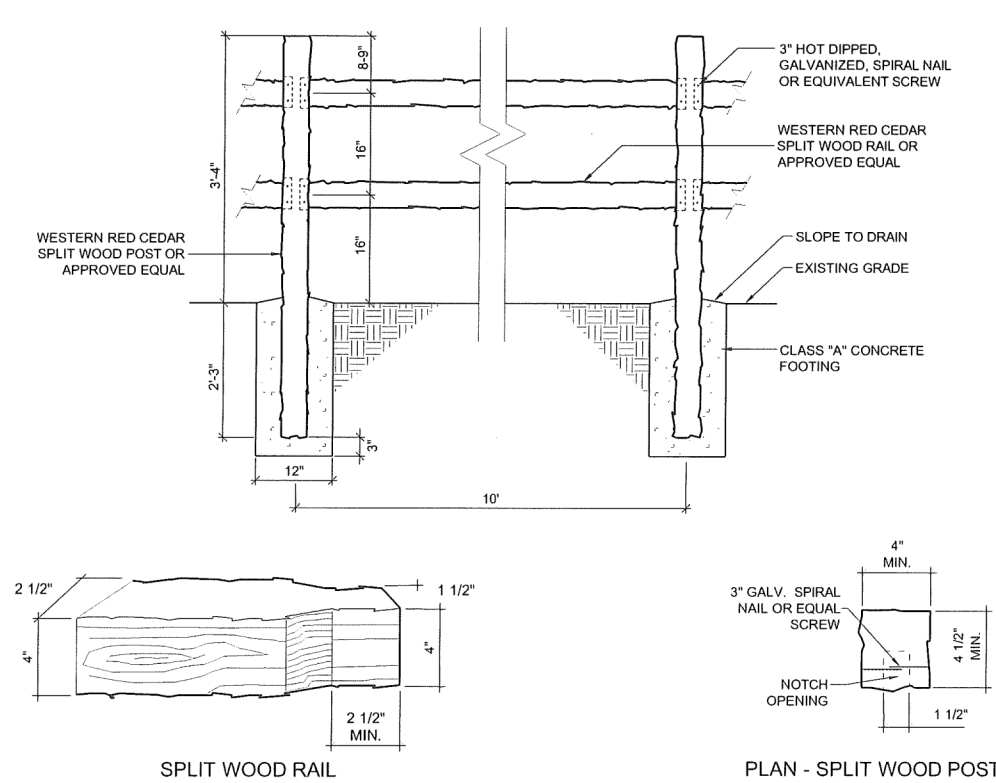
- BOLLARD SHALL BE CONSTRUCTED SO THAT WHEN IN AN UPRIGHT POSITION AND LOCKED IT WILL STAND PLUMB.
- WELDS SHALL BE 3/16" FILLET WELD. GRIND ALL WELDS AND EDGES SMOOTH.
- BOLLARD SHALL BE PRIMED WITH A ZINC RICH PRIMER AND FINISHED WITH A BLACK TGIC POLYESTER POWDER COAT 2.5-3.0 MLS. THICK. SURFACE SHALL BE FREE OF RUST, OILS, ETC. PRIOR TO PAINTING. ENGINEER SHALL APPROVE COLOR PRIOR TO PAINTING. REFLECTIVE TAPE SHALL BE APPLIED HORIZONTALLY ON REMOVABLE BOLLARD AS SHOWN IN THE DETAIL.
- REFLECTIVE TAPE SHALL BE SUBMITTED FOR APPROVAL BY ENGINEER



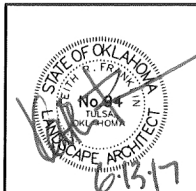
E PLAN VIEW - REMOVABLE BOLLARD
 18 NOT TO SCALE Sta. 39+73.19



F DETAILS - REMOVABLE BOLLARD
 18 NOT TO SCALE Sta. 39+73.19



D WOOD - SPLIT RAIL FENCE
 18 NOT TO SCALE Sta. 39+77.89 - 40+03.94



City of Sand Springs - Park Road Trail		PREPARED BY:	LANDPLAN CONSULTANTS	Tulsa County
Design	JM	7/16		
Drawn	JM/BB	8/16		
Checked	KF/JM	6/17		
Approved				
Squad	LandPlan			
STATE JOB NO. 28844(04)			Sheet No. 18 of 62	

F:\1582 Sand Springs Park Road Trail\Final\1582-Details.DWG, 06/20/17 2:23:21 PM